



电动汽车充电接口

EV Charging Interface



目录内所有产品均可定制
The product can be customized within the catalog

致力于连接系统解决方案 >>>
Committed To Connecting System Solutions



产品介绍 Product Introduce

- ◎ 顺科电动汽车充电系列产品满足国标GB/T20234.1/2/3—2015;
- ◎ 电动汽车充电系列插头符合人体工程学，插拔便捷，有充电防松功能，接口防护等级能达到IP55，机械及电气安全性能通过强检测试；
- ◎ 插针容量大，采用顺科端子独有发明专利技术，充电容量能达到国标要求。
- ◎ **Sanco EV Charging Series Products meet the national standard GB/T20234.1/2/3–2015;**
- ◎ **Sanco EV Charging Series Plug is ergonomic, convenient for plugging and unplugging, charging and anti-loose function, interface protection level can reach IP55, mechanical and electrical safety performance through strong testing;**
- ◎ **The capacity of the pin is large, and the patented technology of Shunke terminal is uniquely used, and the charging capacity can meet the requirements of the national standard.**

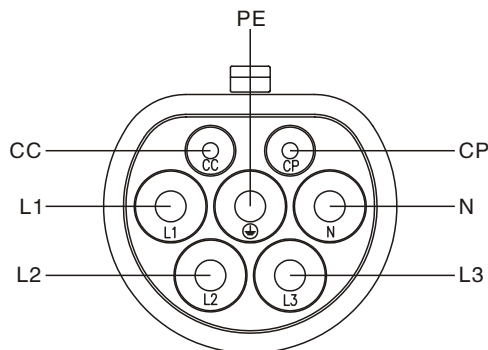
主要性能 Main Performance

机械性能 Mechanical Behavior			
充电插头和插座连接后的插拔力： Insertion force after connecting the charging plug and the receptacle			
交流充电接口	AC Charging Interface	未锁紧状态 Unlocked	≤100N
		锁紧状态 Locked	≥200N
直流充电接口	DC Charging Interface	未锁紧状态 Unlocked	≤140N
		锁紧状态 Locked	≥200N
电气性能 Electrical Performance			
		交流 AC	直流 DC
额定电流	Current Rating	16A/32A/63A	80A/125A/200A/250A
额定电压	Voltage Rating	250V/440V	750V/1000V
绝缘电阻	Insulation Resistance	5MΩ (DC500V 1Min)	
绝缘强度电压	Insulation Strength Voltage	2000V AC	3000V AC
接触阻抗	Contact Resistance	0.5mΩ	0.2mΩ
电子自锁功能	Electronic Self-locking Function	有 Have	无 No
过热温控保护装置	Temperature Control Device	有 Have	有 Have
防护等级	Protection Level	IP55(连接状态 Connection Status)	
工作环境温度	Operation Temperature Range	-35℃~55℃	
阻燃等级	Flammability Rating	UL94V0	
外壳材质	Shell Material	热塑性塑料(PA66/PC) Thermoplastic	
插针	Pin	T2紫铜(表面镀银) T2 Copper (Silvering)	
盐雾测试	Salt Spray Test	96H	

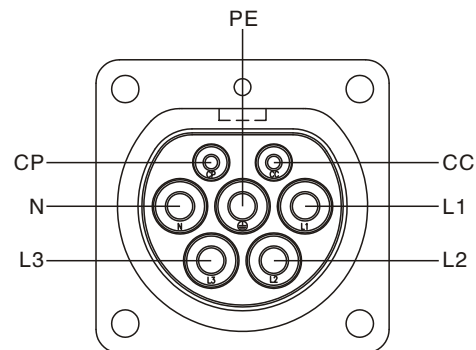
电动汽车充电接口系列分类 EV Charging Interface Series Sort

充电接口类型 Charging Interface Type	额定电压 Voltage Rating	额定电流 Current Rating
交流充电接口 AC Charging Interface	250V/440V	10A
		16A
		32A
直流充电接口 DC Charging Interface	750V/1000V	80A
		125A
		200A
		250A

交流充电接口触头布置方式 AC Vharging Interface Contact Arrangement



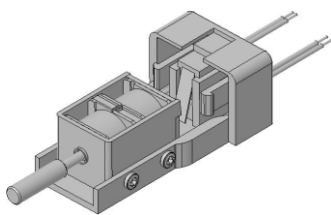
车端/供电端插头
Car Port/Power Supply Plug



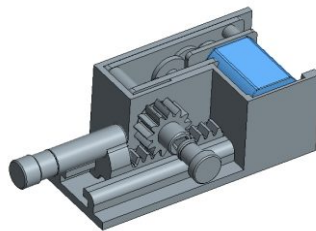
车端/供电端插座
Car Port/Power Supply Receptacle

触头 Contact	功能定义 Function Definition	额定电流 Current Rating
L2	交流电源 AC Power	10A/16A/32A/63A
L2		10A/16A/32A/63A
L3		10A/16A/32A/63A
N	中线 Midline	10A/16A/32A/63A
PE	接地保护 Ground Protection	---
CC	充电连接确认 Charging Connection Confirmation	2A
CP	控制引导 Control Guidance	2A

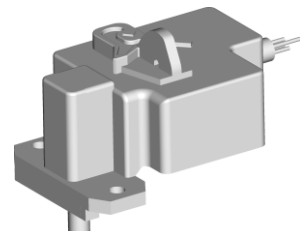
电子锁 Electronic Locks



电磁式电子锁
Electromagnetic Electronic Lock

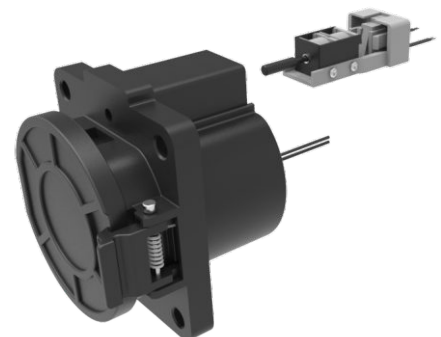


马达式电子锁(定制款)
Motorized Electronic Lock (Customized)



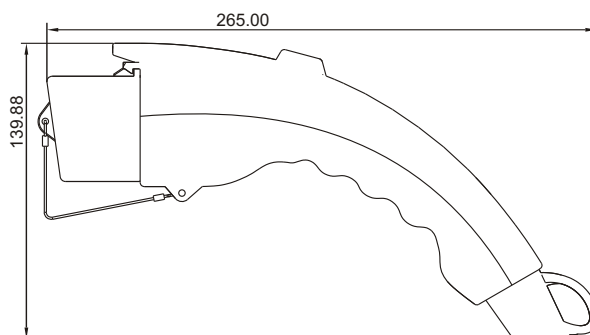
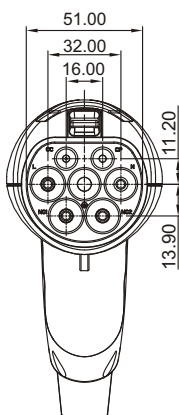
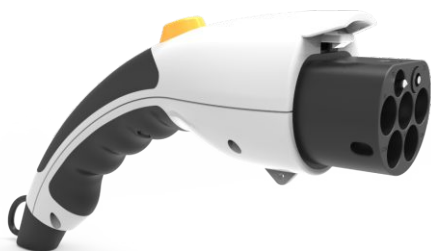
马达式电子锁
Motorized Electronic Lock

工作环境温度·湿度 Operation Temperature Range·Humidity	-40℃ ~ +80℃, 5% ~ 95%RH
绝缘等级 Insulation Level	H级(180℃)
功耗 Power Consumption	24W(DC12V, R=6Ω ± 10%)
使用电压范围 Use Voltage Range	DC12V ± 10%
寿命 Cycles	≥10万次

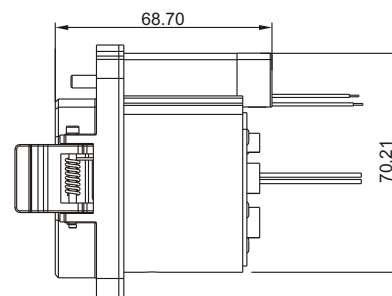
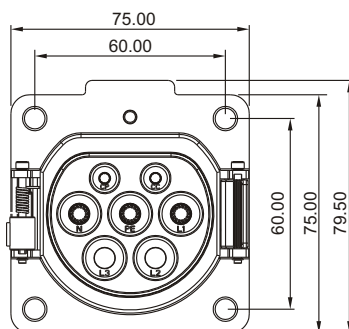


交流充电接口外形尺寸 AC Charging Interface Dimensions

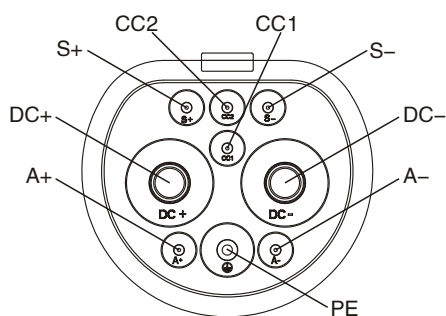
插头 Plug



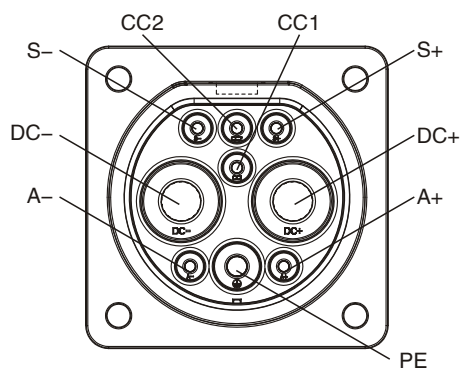
插座 Receptacle



直流充电接口触头布置方式 DC Vharging Interface Contact Arrangement



车端/供电端插头
Car Port/Power Supply Plug

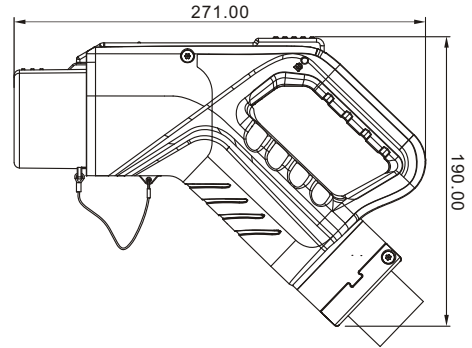
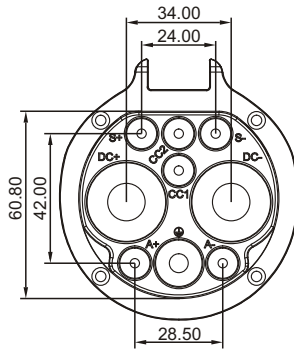


车端/供电端插座
Car Port/Power Supply Receptacle

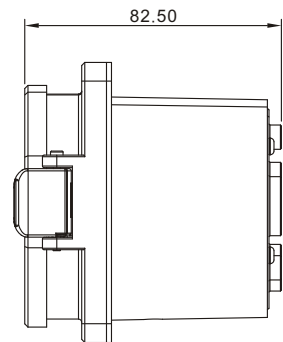
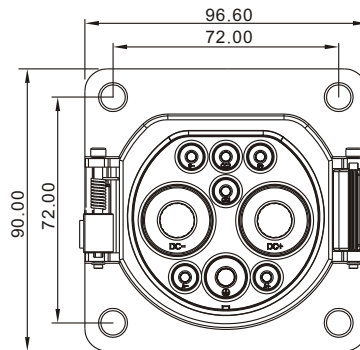
触头 Contact	功能定义 Function Definition	额定电流 Current Rating
DC+	直流电源正 DC Power Positive	80A/125A/200A/250A
DC-	直流电源负 DC Power Negative	80A/125A/200A/250A
PE	接地保护 Ground Protection	---
S+	充电通讯CAN_H Charging Communication CAN_H	2A
S-	充电通讯CAN_L Charging Communication CAN_L	2A
CC1	充电连接确认 Charging Connection Confirmation	2A
CC2		2A
A+	低压辅助电源正 Low Voltage Auxiliary Power Positive	20A
A-	低压辅助电源负 Low Voltage Auxiliary Power Negative	20A

直流充电接口外形尺寸 DC Charging Interface Dimensions

插头 Plug



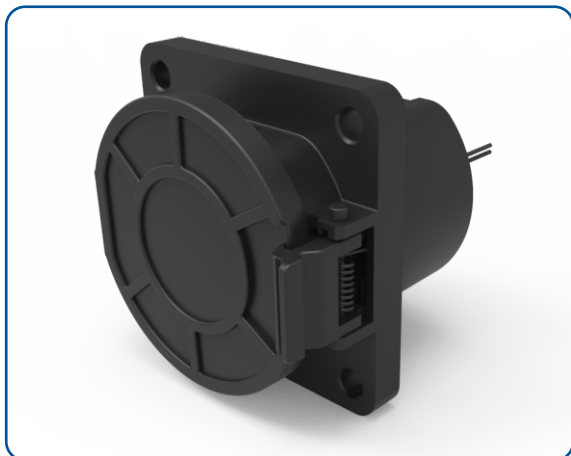
插座 Receptacle



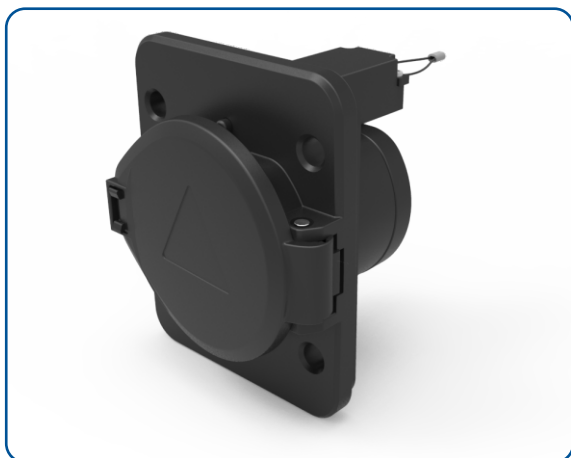
交流充电接口产品型号 AC Charging Interface Product Model



产品名称 Product Name	
带电子锁标准AC交流充电插座 Standard AC Charging Receptacle With Electronic Lock	
产品型号 Product Model	
P/N	L61-B1690-07S-016
	L61-B1690-07S-032



产品名称 Product Name	
无电子锁AC交流充电插座 No Electronic Lock AC Charging Receptacle	
产品型号 Product Model	
P/N	SK62-16AZ-CN30



产品名称 Product Name	
Push AC交流充电插座 Push AC Charging Receptacle	
产品型号 Product Model	
P/N	SK62-32AZ-CE26

交流充电接口产品型号 AC Charging Interface Product Model



产品名称 Product Name	
欧标AC交流插座单相款 European Standard AC Receptacle Single Phase	
P/N	SK62-B2889-000
产品名称 Product Name	
欧标AC交流插座三相款 European Standard AC Receptacle Three-Phase	
P/N	SK62-B2889-000A



产品名称 Product Name	
国标AC交流插头 GB AC Plug	
产品型号 Product Model	
P/N	L61-B1566-002

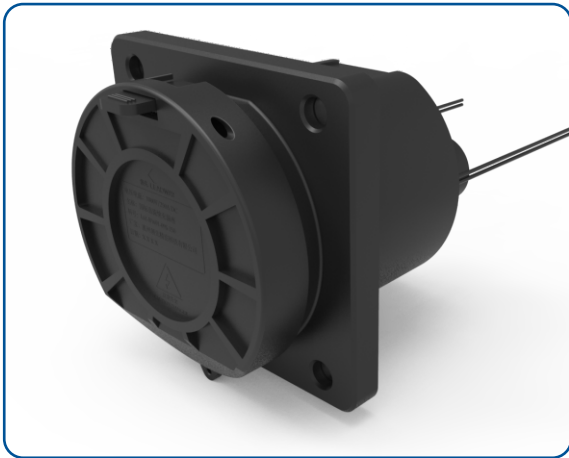


产品名称 Product Name	
国标AC交流插头(带呼吸灯) GB AC Plug(with breathing light)	
产品型号 Product Model	
P/N	CC62-32AP-VN01

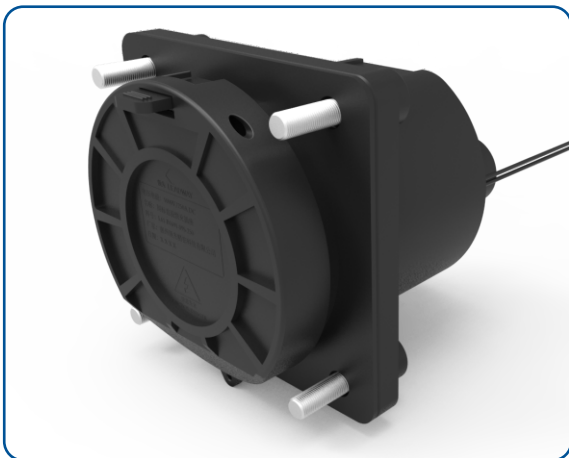
直流充电接口产品型号 DC Charging Interface Product Model



产品名称 Product Name	
标准DC充电插座 Standard DC Charging Receptacle	
P/N	L61-B1691-09S-80A
	L61-B1691-09S-125A
	L61-B1691-09S-200A
	L61-B1691-09S-250A



产品名称 Product Name	
按扣前装DC直流充电插座 Install DC Charging Receptacle Before The Buckle	
产品型号 Product Model	
P/N	SK62-125AZ-CN32



产品名称 Product Name	
按扣后装DC直流充电插座 Install DC Charging Receptacle After The Buckle	
P/N	SK62-125AZ-CN32

直流充电接口产品型号 DC Charging Interface Product Model



产品名称 Product Name	
-------------------	--

Push DC直流充电插座 Push DC Charging Receptacle	
--	--

产品型号 Product Model	
--------------------	--

P/N	SK62-250AZ-CN27
-----	-----------------



产品名称 Product Name	
-------------------	--

90度弯头DC直流电插座 90° Elbow DC Receptacle	
---	--

产品型号 Product Model	
--------------------	--

P/N	L61-B1691-09S-125-C
-----	---------------------



产品名称 Product Name	
-------------------	--

DC 直流充电插头 DC Charging Plug	
-------------------------------	--

产品型号 Product Model	
--------------------	--

P/N	SK62-250AT-CCE1500
-----	--------------------

■ 专业 ■ 品质 ■ 服务



顺科新能源技术股份有限公司
Sanco New Energy Technology Co., Ltd.

地址：广东省广州市增城区增江大道(东区)高科技工业园纬四路9号
Add: No.9 Weisi Rd. Hightech Industrial Park. ZengJiang Avenue
(East), ZengCheng District, GuangZhou, GuangDong.
Tel: +86-20-2261 6666 Fax: +86-20-2261 9977
Http: www.sanco-china.com