



STP系列圆形金属连接器

STP Series Circular Metal Connector



目录内所有产品均可定制
The product can be customized within the catalog

致力于连接系统解决方案 >>>
Committed To Connecting System Solutions

STP圆形连接器 STP Circular Connector

STP圆形工业连接器参考美军MIL-C-26482系列I设计。

该系列连接器在工业领域内应用非常广泛，它通常被使用在汽车、机器人、军事、焊接工业和其它要求互联的设备上，我们提供从#12—#18号壳体的孔位排布，各种线号端子可供选择，是性价比极高的解决方案，主要用于混合动力汽车传输大电流，高电压，具有重量轻、耐腐蚀的特点。

STP Circular Industrial Connector reference US military MIL-C-26482 series I design.

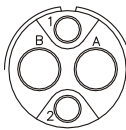
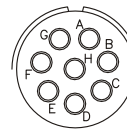
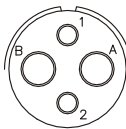
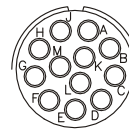
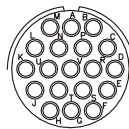
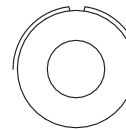
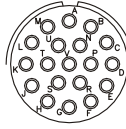

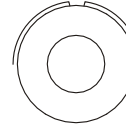
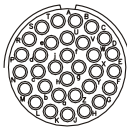
This series of connectors is widely used in the industrial field. It is usually used in the automotive, robotics, military, welding industry and other equipment that requires interconnection. We provide holes from the #12—#16 housing. Various wire number terminals are available for selection. It is a cost-effective solution. It is mainly used for hybrid vehicles to transmit high current, high voltage, light weight and corrosion resistance.

技术参数 TECHNICAL DATA	
温度范围 Temperature Range	-40℃~+120℃
防护等级 Protection	IP67
最大工作电流(最大线径) Max. Current(Max. Wire Gauge)	200A (35mm ²)
额定工作电压 Maximum Voltage	300V AC/DC
测试电压(端子之间) Test Voltage(Between Contacts)	2000V AC
机械寿命 Mating Cycles	≥200
盐雾等级 Salt Spray	48H
绝缘电阻 Insulation Resistance	500MΩ
ROHS Compliant	Yes
主要材料 MAIN MATERIAL	
壳体 Housing Body	锌合金，压铸件 Zinc Alloy, Die-Cast
连接螺母 Connecting Nut	铝合金 Aluminum alloy
绝缘体 Insulation Inserts	热塑性材料 Thermoplastic
端子 Contacts	铜合金，镀银 Brass, Silver-Plated
密封件 Seals	硅胶材料 Silicone

◎插针排布 Insert Arrangement

端子进入胶芯的正面及适用端子、电流、电压等。

Contacts enters the front side of the core and the applicable terminals, current, voltage, etc.

16#端子16A/330V 16#Contacts (1.6mm) 16A/330V		VDE版，电源与 信号端子混合分布 VDE#Versions Mixed Power/Signal	20#端子 20#Contacts (1.0mm) 5A/150V；7.5A/150V		单芯电源端子 Single Pin Power Contacts
Shell 12	N/A	 12-2(13A/30A) 600V AC/800V DC	 12-8		
Shell 14	N/A	 14-2(13A/23A) 500V AC/700V DC	 14-12	 14-19	 14-1 6mm(120A)
Shell 16	 16-19	 16-2	N/A		 16-1 8mm(200A)
Shell 18	N/A	N/A	 18-32		

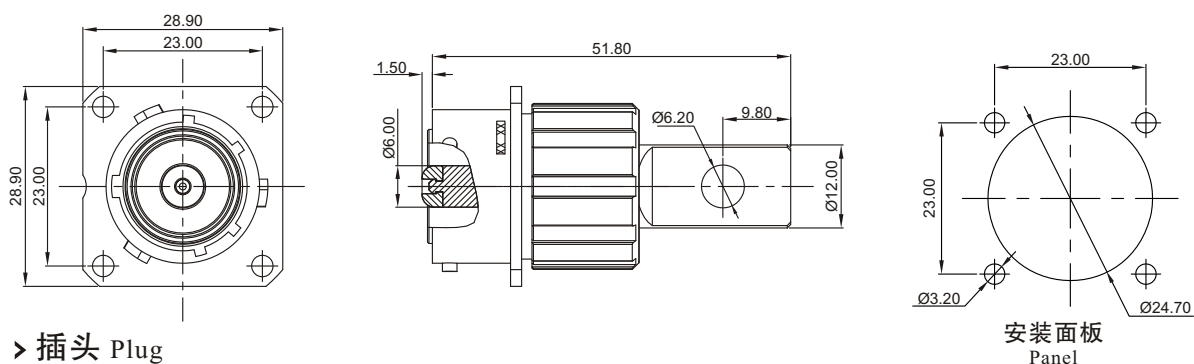
◎单芯电源端子 Single Pin Power Contacts

#14_STP14-1

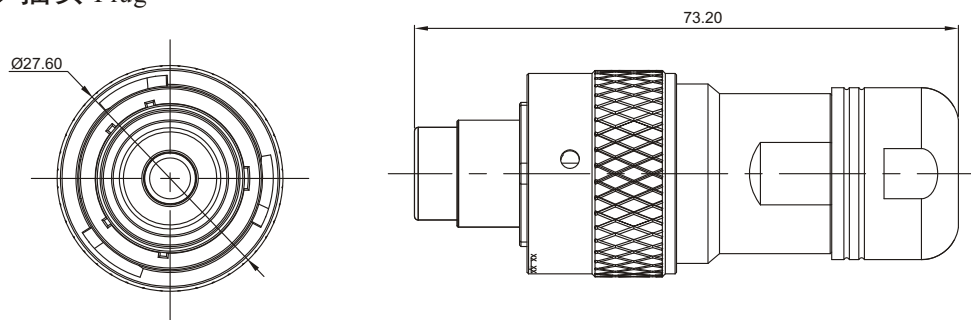


> 产品尺寸 Products Dimensions

> 插座 Receptacle



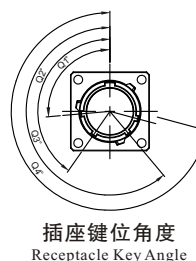
> 插头 Plug



> 订购信息 Ordering Information

非屏蔽插头料号 Unshielded Plug Number	键位角度 Key Angle				带屏蔽插头料号 Shielding Plug Number	键位角度 Key Angle				外壳颜色(色卡编号) Shell Colour (Colour Atla No.)
	Q1	Q2	Q3	Q4		Q1	Q2	Q3	Q4	
L52-STP203-01S-N	105°	140°	215°	265°	L52-STP033-01S-N	105°	140°	215°	265°	SILVER (#C0C0C0)
L52-STP203-01S-W	60°	140°	215°	265°	L52-STP033-01S-W	60°	140°	215°	265°	BLACK (#000000)
L52-STP203-01S-X	105°	160°	215°	265°	L52-STP033-01S-X	105°	160°	215°	265°	BLUE (#0000FF)
L52-STP203-01S-Y	105°	140°	225°	265°	L52-STP033-01S-Y	105°	140°	225°	265°	GREEN (#00FF00)
L52-STP203-01S-Z	105°	140°	215°	295°	L52-STP033-01S-Z	105°	140°	215°	295°	RED (#FF0000)

插座料号 Receptacle Number	键位角度 Key Angle				外壳颜色(色卡编号) Shell Colour (Colour Atla No.)
	Q1	Q2	Q3	Q4	
L52-STP043-01P-N	105°	140°	215°	265°	SILVER (#C0C0C0)
L52-STP043-01P-W	60°	140°	215°	265°	BLACK (#000000)
L52-STP043-01P-X	105°	160°	215°	265°	BLUE (#0000FF)
L52-STP043-01P-Y	105°	140°	225°	265°	GREEN (#00FF00)
L52-STP043-01P-Z	105°	140°	215°	295°	RED (#FF0000)



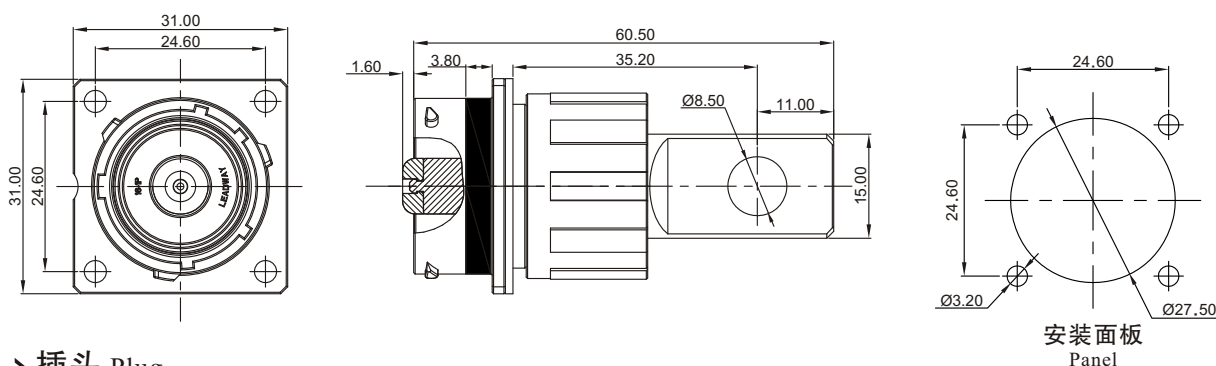
◎单芯电源端子 Single Pin Power Contacts

#16_STP16-1

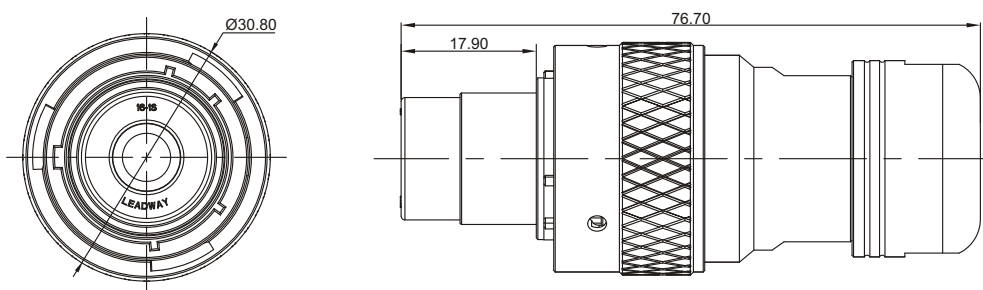


> 产品尺寸 Products Dimensions

> 插座 Receptacle

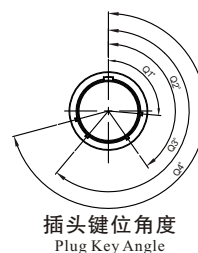


> 插头 Plug

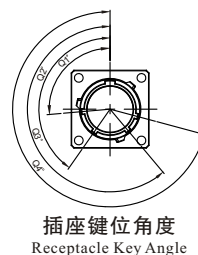


> 订购信息 Ordering Information

插头料号 Plug Number	键位角度 Key Angle				外壳颜色(色卡编号) Shell Colour (Colour Atla No.)
	Q1	Q2	Q3	Q4	
L52-STP204-01S-N	105°	140°	215°	265°	SILVER (#C0C0C0)
L52-STP204-01S-W	30°	140°	215°	265°	BLACK (#000000)
L52-STP204-01S-X	105°	165°	215°	265°	BLUE (#0000FF)
L52-STP204-01S-Y	105°	140°	225°	265°	GREEN (#00FF00)
L52-STP204-01S-Z	105°	140°	215°	315°	RED (#FF0000)



带屏蔽插座料号 Shielding Receptacle Number	键位角度 Key Angle				外壳颜色(色卡编号) Shell Colour (Colour Atla No.)
	Q1	Q2	Q3	Q4	
L52-STP044-01P-N	105°	140°	215°	265°	SILVER (#C0C0C0)
L52-STP044-01P-W	30°	140°	215°	265°	BLACK (#000000)
L52-STP044-01P-X	105°	165°	215°	265°	BLUE (#0000FF)
L52-STP044-01P-Y	105°	140°	225°	265°	GREEN (#00FF00)
L52-STP044-01P-Z	105°	140°	215°	315°	RED (#FF0000)



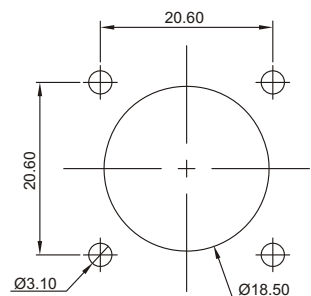
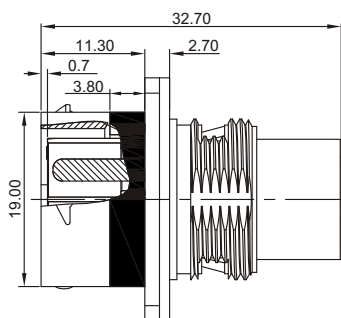
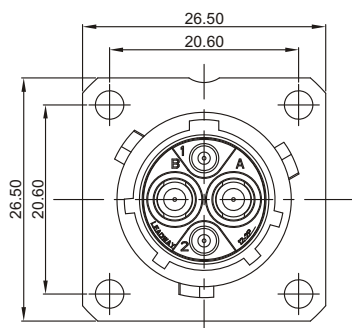
◎多芯系列产品信息 Multi-core Series Product Information

#12_STP12-2



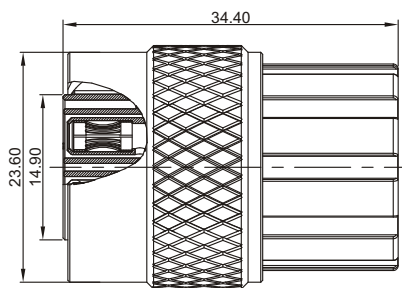
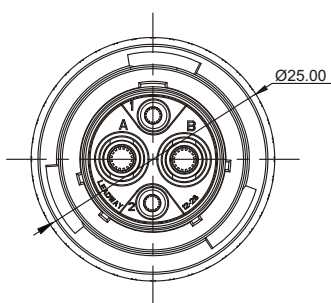
> 产品尺寸 Products Dimensions

> 插座 Receptacle



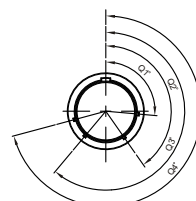
安装面板
Panel

> 插头 Plug



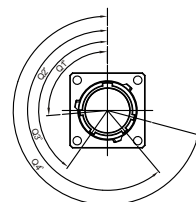
> 订购信息 Ordering Information

插头料号 Plug Number	键位角度 Key Angle				外壳颜色(色卡编号) Shell Colour (Colour Atla No.)
	Q1	Q2	Q3	Q4	
L52-STP022-02S-N	105°	140°	215°	265°	SILVER (#C0C0C0)
L52-STP022-02S-W	60°	140°	215°	265°	BLACK (#000000)
L52-STP022-02S-X	105°	165°	215°	265°	BLUE (#0000FF)
L52-STP022-02S-Y	105°	140°	225°	265°	GREEN (#00FF00)
L52-STP022-02S-Z	105°	140°	215°	315°	RED (#FF0000)



插头键位角度
Plug Key Angle

插座料号 Receptacle Number	键位角度 Key Angle				外壳颜色(色卡编号) Shell Colour (Colour Atla No.)
	Q1	Q2	Q3	Q4	
L52-STP002-02P-N	105°	140°	215°	265°	SILVER (#C0C0C0)
L52-STP002-02P-W	60°	140°	215°	265°	BLACK (#000000)
L52-STP002-02P-X	105°	165°	215°	265°	BLUE (#0000FF)
L52-STP002-02P-Y	105°	140°	225°	265°	GREEN (#00FF00)
L52-STP002-02P-Z	105°	140°	215°	315°	RED (#FF0000)



插座键位角度
Receptacle Key Angle

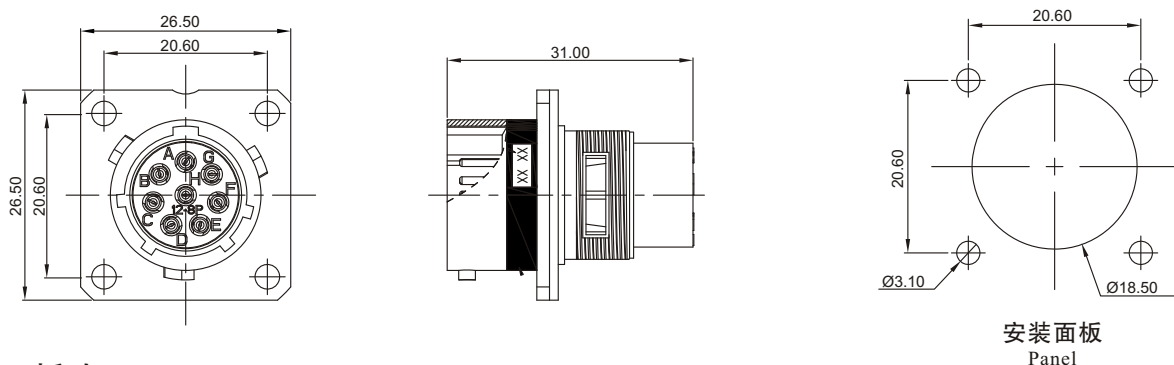
◎ 多芯系列产品信息 Multi-core Series Product Information

#12_STP12-8

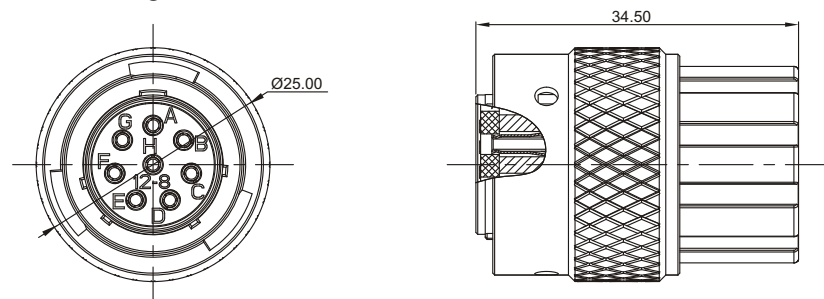


➤ 产品尺寸 Products Dimensions

➤ 插座 Receptacle

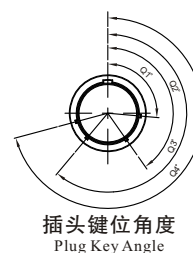


➤ 插头 Plug

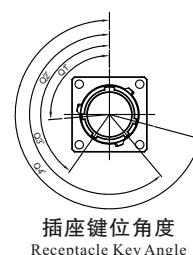


➤ 订购信息 Ordering Information

插头料号 Plug Number	键位角度 Key Angle				外壳颜色(色卡编号) Shell Colour (Colour Atla No.)
	Q1	Q2	Q3	Q4	
L52-STP082-08S-N	105°	140°	215°	265°	SILVER (#C0C0C0)
L52-STP082-08S-W	60°	140°	215°	265°	BLACK (#000000)
L52-STP082-08S-X	105°	165°	215°	265°	BLUE (#0000FF)
L52-STP082-08S-Y	105°	140°	225°	265°	GREEN (#00FF00)
L52-STP082-08S-Z	105°	140°	215°	315°	RED (#FF0000)



插座料号 Receptacle Number	键位角度 Key Angle				外壳颜色(色卡编号) Shell Colour (Colour Atla No.)
	Q1	Q2	Q3	Q4	
L52-STP062-08P-N	105°	140°	215°	265°	SILVER (#C0C0C0)
L52-STP062-08P-W	60°	140°	215°	265°	BLACK (#000000)
L52-STP062-08P-X	105°	165°	215°	265°	BLUE (#0000FF)
L52-STP062-08P-Y	105°	140°	225°	265°	GREEN (#00FF00)
L52-STP062-08P-Z	105°	140°	215°	315°	RED (#FF0000)



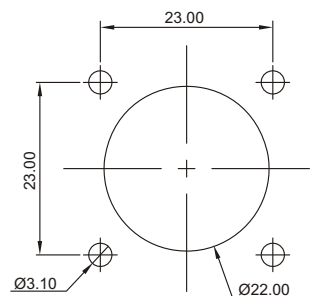
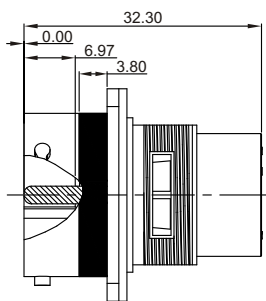
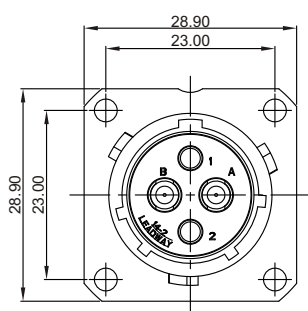
◎多芯系列产品信息 Multi-core Series Product Information

#14_STP14-2



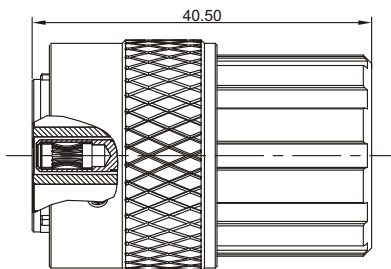
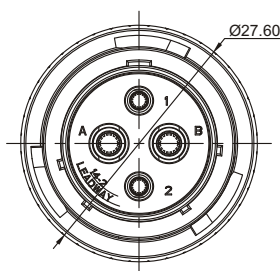
> 产品尺寸 Products Dimensions

> 插座 Receptacle



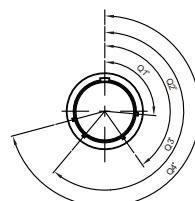
安装面板
Panel

> 插头 Plug



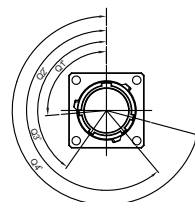
> 订购信息 Ordering Information

插头料号 Plug Number	键位角度 Key Angle				外壳颜色(色卡编号) Shell Colour (Colour Atla No.)
	Q1	Q2	Q3	Q4	
L52-STP023-02S-N	105°	140°	215°	265°	SILVER (#C0C0C0)
L52-STP023-02S-W	60°	140°	215°	265°	BLACK (#000000)
L52-STP023-02S-X	105°	160°	215°	265°	BLUE (#0000FF)
L52-STP023-02S-Y	105°	140°	225°	265°	GREEN (#00FF00)
L52-STP023-02S-Z	105°	140°	215°	295°	RED (#FF0000)



插头键位角度
Plug Key Angle

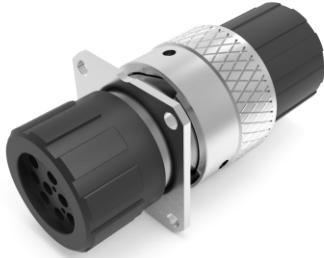
插座料号 Receptacle Number	键位角度 Key Angle				外壳颜色(色卡编号) Shell Colour (Colour Atla No.)
	Q1	Q2	Q3	Q4	
L52-STP003-02P-N	105°	140°	215°	265°	SILVER (#C0C0C0)
L52-STP003-02P-W	60°	140°	215°	265°	BLACK (#000000)
L52-STP003-02P-X	105°	160°	215°	265°	BLUE (#0000FF)
L52-STP003-02P-Y	105°	140°	225°	265°	GREEN (#00FF00)
L52-STP003-02P-Z	105°	140°	215°	295°	RED (#FF0000)



插座键位角度
Receptacle Key Angle

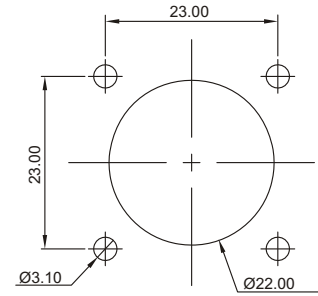
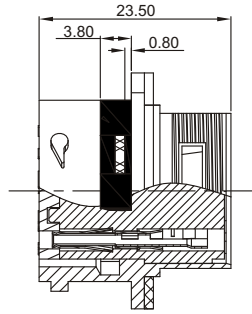
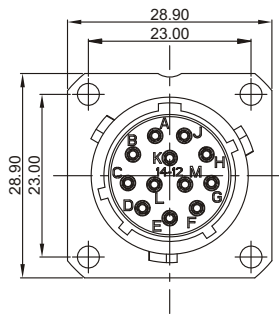
◎ 多芯系列产品信息 Multi-core Series Product Information

#14_STP14-12



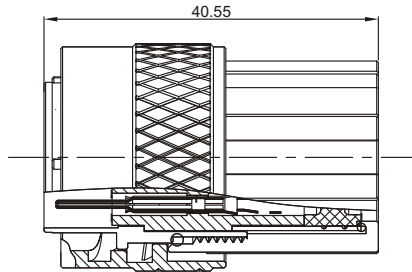
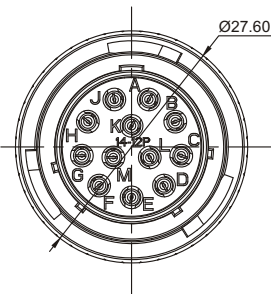
➤ 产品尺寸 Products Dimensions

➤ 插座 Receptacle



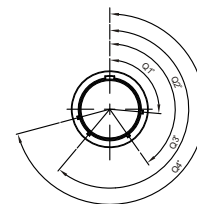
安装面板
Panel

➤ 插头 Plug



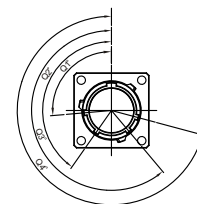
➤ 订购信息 Ordering Information

插头料号 Plug Number	键位角度 Key Angle				外壳颜色(色卡编号) Shell Colour (Colour Atla No.)
	Q1	Q2	Q3	Q4	
L52-STP083-12P-N	105°	140°	215°	265°	SILVER (#C0C0C0)
L52-STP083-12P-W	60°	140°	215°	265°	BLACK (#000000)
L52-STP083-12P-X	105°	160°	215°	265°	BLUE (#0000FF)
L52-STP083-12P-Y	105°	140°	225°	265°	GREEN (#00FF00)
L52-STP083-12P-Z	105°	140°	215°	295°	RED (#FF0000)



插头键位角度
Plug Key Angle

插座料号 Receptacle Number	键位角度 Key Angle				外壳颜色(色卡编号) Shell Colour (Colour Atla No.)
	Q1	Q2	Q3	Q4	
L52-STP063-12S-N	105°	140°	215°	265°	SILVER (#C0C0C0)
L52-STP063-12S-W	60°	140°	215°	265°	BLACK (#000000)
L52-STP063-12S-X	105°	160°	215°	265°	BLUE (#0000FF)
L52-STP063-12S-Y	105°	140°	225°	265°	GREEN (#00FF00)
L52-STP063-12S-Z	105°	140°	215°	295°	RED (#FF0000)



插座键位角度
Receptacle Key Angle

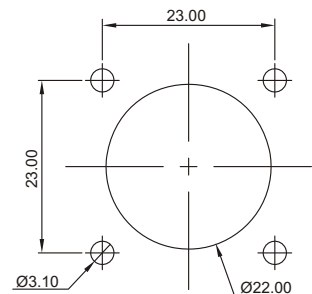
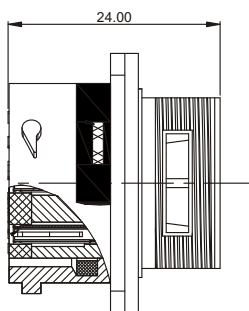
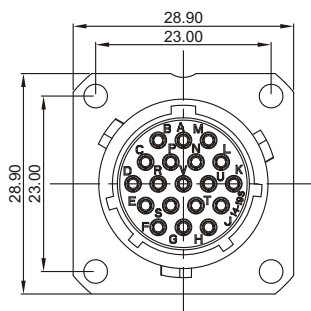
◎ 多芯系列产品信息 Multi-core Series Product Information

#14_STP14-19



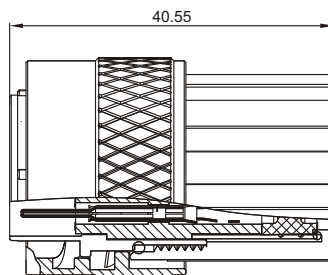
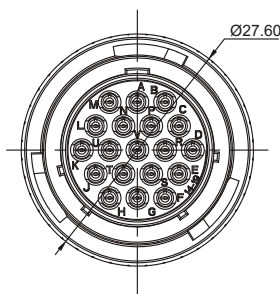
> 产品尺寸 Products Dimensions

> 插座 Receptacle



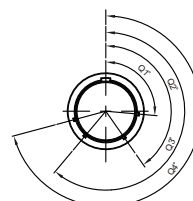
安装面板
Panel

> 插头 Plug



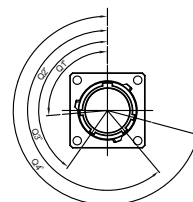
> 订购信息 Ordering Information

插头料号 Plug Number	键位角度 Key Angle				外壳颜色(色卡编号) Shell Colour (Colour Atla No.)
	Q1	Q2	Q3	Q4	
L52-STP083-19P-N	105°	140°	215°	265°	SILVER (#C0C0C0)
L52-STP083-19P-W	60°	140°	215°	265°	BLACK (#000000)
L52-STP083-19P-X	105°	160°	215°	265°	BLUE (#0000FF)
L52-STP083-19P-Y	105°	140°	225°	265°	GREEN (#00FF00)
L52-STP083-19P-Z	105°	140°	215°	295°	RED (#FF0000)



插头键位角度
Plug Key Angle

插座料号 Receptacle Number	键位角度 Key Angle				外壳颜色(色卡编号) Shell Colour (Colour Atla No.)
	Q1	Q2	Q3	Q4	
L52-STP063-19S-N	105°	140°	215°	265°	SILVER (#C0C0C0)
L52-STP063-19S-W	60°	140°	215°	265°	BLACK (#000000)
L52-STP063-19S-X	105°	160°	215°	265°	BLUE (#0000FF)
L52-STP063-19S-Y	105°	140°	225°	265°	GREEN (#00FF00)
L52-STP063-19S-Z	105°	140°	215°	295°	RED (#FF0000)



插座键位角度
Receptacle Key Angle

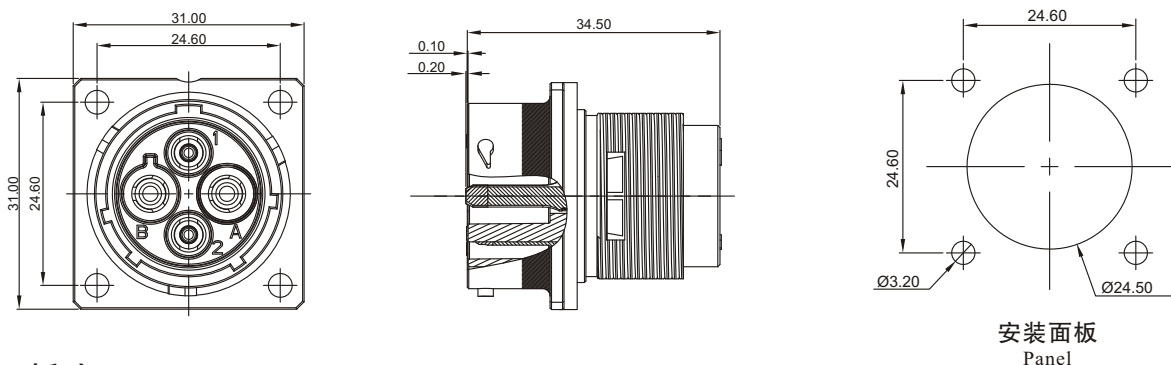
◎ 多芯系列产品信息 Multi-core Series Product Information

#16_STP16-2

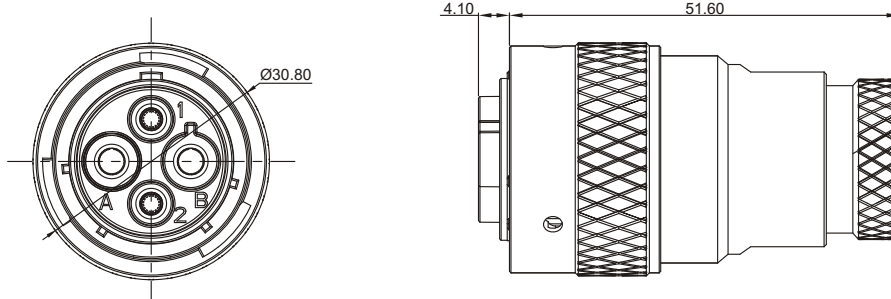


> 产品尺寸 Products Dimensions

> 插座 Receptacle



> 插头 Plug

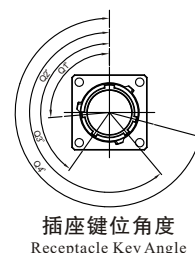


> 订购信息 Ordering Information

插头料号 Plug Number	键位角度 Key Angle				外壳颜色(色卡编号) Shell Colour (Colour Atla No.)
	Q1	Q2	Q3	Q4	
L52-STP134-02S-N	105°	140°	215°	265°	SILVER (#C0C0C0)
L52-STP134-02S-W	30°	140°	215°	265°	BLACK (#000000)
L52-STP134-02S-X	105°	165°	215°	265°	BLUE (#0000FF)
L52-STP134-02S-Y	105°	140°	225°	265°	GREEN (#00FF00)
L52-STP134-02S-Z	105°	140°	215°	315°	RED (#FF0000)



插座料号 Receptacle Number	键位角度 Key Angle				外壳颜色(色卡编号) Shell Colour (Colour Atla No.)
	Q1	Q2	Q3	Q4	
L52-STP004-02P-N	105°	140°	215°	265°	SILVER (#C0C0C0)
L52-STP004-02P-W	30°	140°	215°	265°	BLACK (#000000)
L52-STP004-02P-X	105°	165°	215°	265°	BLUE (#0000FF)
L52-STP004-02P-Y	105°	140°	225°	265°	GREEN (#00FF00)
L52-STP004-02P-Z	105°	140°	215°	315°	RED (#FF0000)



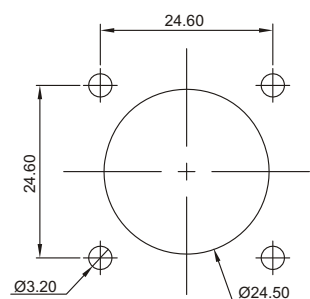
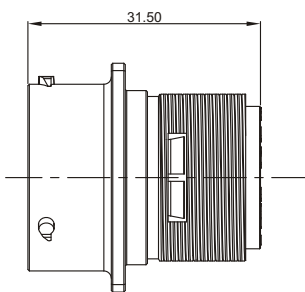
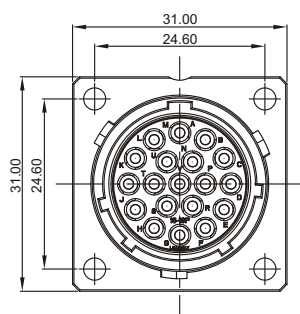
◎ 多芯系列产品信息 Multi-core Series Product Information

#16_STP16-19



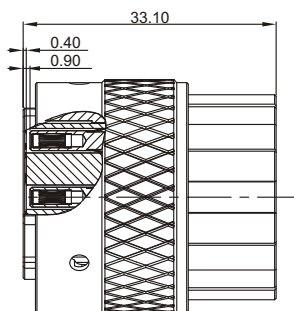
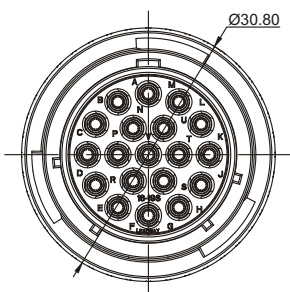
> 产品尺寸 Products Dimensions

> 插座 Receptacle



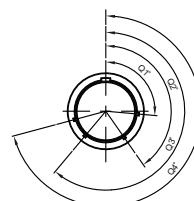
安装面板
Panel

> 插头 Plug



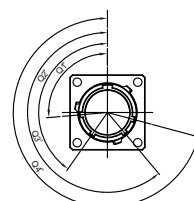
> 订购信息 Ordering Information

插头料号 Plug Number	键位角度 Key Angle				外壳颜色(色卡编号) Shell Colour (Colour Atla No.)
	Q1	Q2	Q3	Q4	
L52-STP024-19S-N	105°	140°	215°	265°	SILVER (#C0C0C0)
L52-STP024-19S-W	30°	140°	215°	265°	BLACK (#000000)
L52-STP024-19S-X	105°	165°	215°	265°	BLUE (#0000FF)
L52-STP024-19S-Y	105°	140°	225°	265°	GREEN (#00FF00)
L52-STP024-19S-Z	105°	140°	215°	315°	RED (#FF0000)



插头键位角度
Plug Key Angle

插座料号 Receptacle Number	键位角度 Key Angle				外壳颜色(色卡编号) Shell Colour (Colour Atla No.)
	Q1	Q2	Q3	Q4	
L52-STP004-19P-N	105°	140°	215°	265°	SILVER (#C0C0C0)
L52-STP004-19P-W	30°	140°	215°	265°	BLACK (#000000)
L52-STP004-19P-X	105°	165°	215°	265°	BLUE (#0000FF)
L52-STP004-19P-Y	105°	140°	225°	265°	GREEN (#00FF00)
L52-STP004-19P-Z	105°	140°	215°	315°	RED (#FF0000)



插座键位角度
Receptacle Key Angle

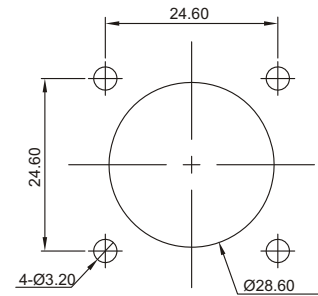
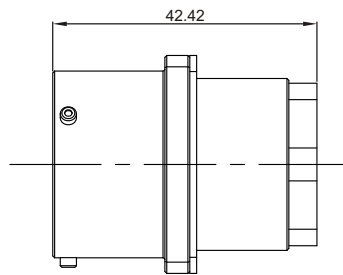
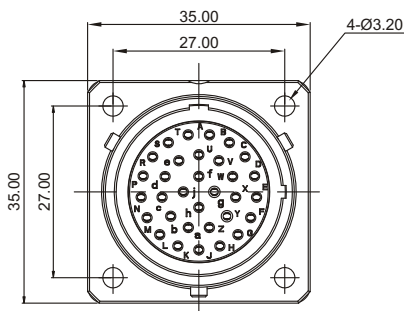
◎ 多芯系列产品信息 Multi-core Series Product Information

#18_ST18-32



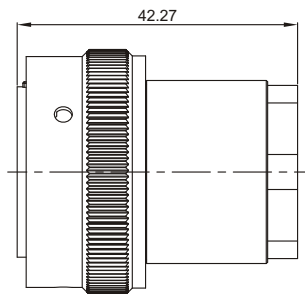
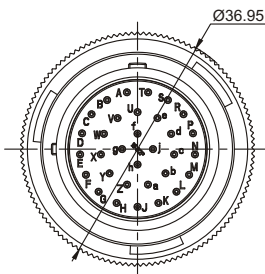
➤ 产品尺寸 Products Dimensions

➤ 插座 Receptacle



安装面板
Panel

➤ 插头 Plug



➤ 订购信息 Ordering Information

插头料号 Plug Number	颜色 Color	端子接线方式 Contact Termination	适配线缆 Cable Size
ST06-18-32PX-001	银色 Silver	压接 Crimp	0.5~0.75mm ²

插座料号 Receptacle Number	颜色 Color	端子接线方式 Contact Termination	适配线缆 Cable Size
ST02-18-32SX-001	银色 Silver	压接 Crimp	0.5~0.75mm ²

■ 专业 ■ 品质 ■ 服务



顺科新能源技术股份有限公司
Sanco New Energy Technology Co., Ltd.

地址：广东省广州市增城区增江大道(东区)高科技工业园纬四路9号
Add: No.9 Weisi Rd. Hightech Industrial Park. ZengJiang Avenue
(East), ZengCheng District, GuangZhou, GuangDong.
Tel: +86-20-2261 6666 Fax: +86-20-2261 9977
Http: www.sanco-china.com